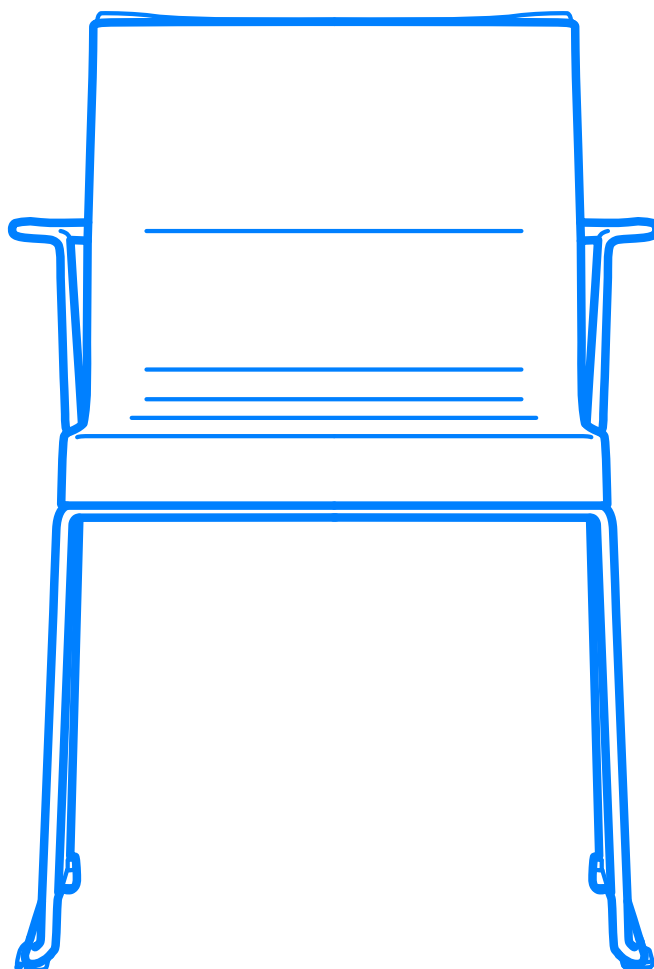


STICK CHAIR

Skid base



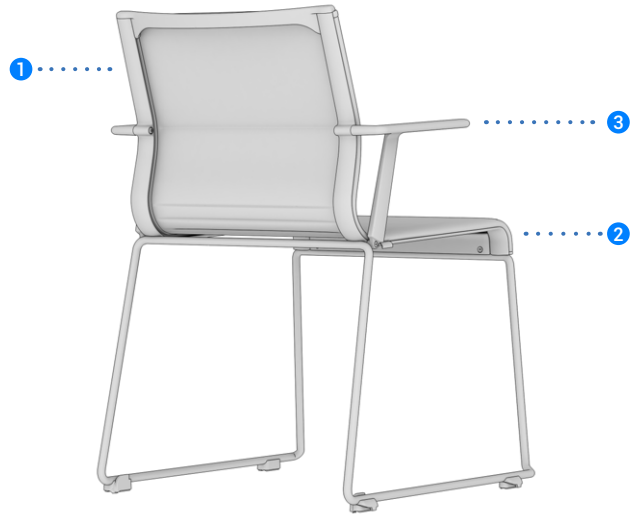
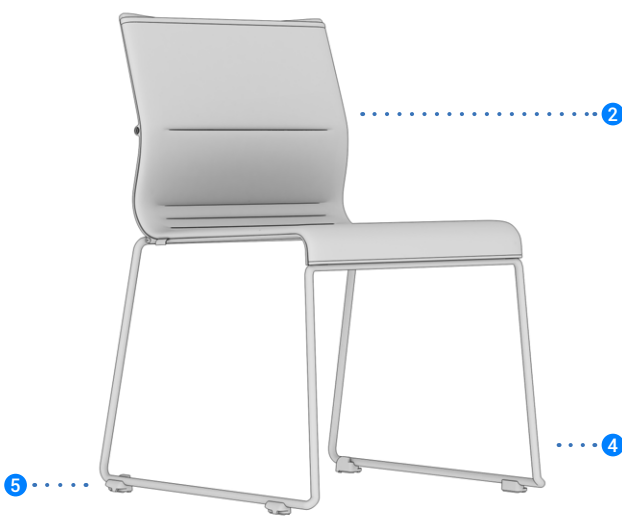
Design story



Minimum amount of material employed, maximum breathability, great comfort, extreme lightness and easy handling. The Stick Chair Skid base sums up the characteristics of the modern multi-purpose armchair. It sets new reference standards in terms of design, innovation and quality for furnishing work areas, where functional characteristics are just as important as having a convincing look.

The shell is made of die-cast aluminum side elements that support the upholstery sheet: a suspension in mesh or in fabric or leather with high elasticity characteristics. The handle, supporting the backrest, facilitates its movement. Tubular metal base with reduced section. The result is a light, robust and practical chair.

Specifications



1 Structure: Die-cast aluminum or plastic side elements and crosspieces elements fixed together. The resulting frame is a rigid structure able to maintain its shape even under conditions of considerable stress and also functions as a specific support for the elastic mesh and the fabric or leather upholstery. Available with low or high back and in two different finishes: chromed or painted.

2 Seat and backrest: The seat and backrest are made of a single flexible sheet in elastic material, tensioned in suspension on the perimeter structure. The mesh sheet ensures full breathability and thorough air circulation and is available in nylon mesh (single-color - 75% vinyl resin, 25% polyester) or in elastic mesh (two-toned effect - 70% polyester elastomer, 30% polyester). The fabric or leather sheet is pressed onto a central layer of high-resistance technical material and two layers of flexible polyurethane. The leather covering includes an eco-leather back with predetermined color combinations.

3 Armrests: Open shaped armrests made according to the models: in thermoplastic material reinforced with glass fibre and finish depending on the structure; in die-cast aluminum with finish depending on the structure and optional plastic cover. The armrests can be dismantled and replaced on site. Also available without armrests.

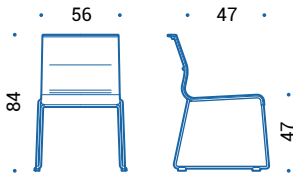
4 Base: Skid base chair in chromed or painted round steel rod, diam. 14 mm.

5 Glides: In transparent polycarbonate. They are suitable for the linking of the chairs in a row.

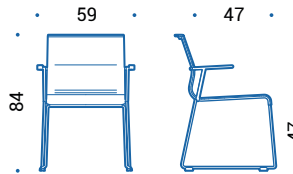
Stackability: The chairs only weigh 4.4 kg each, which allows for simple and intuitive stacking by adding only 22 mm between chairs. Chair with aluminum armrests: stackable up to 8 units in height, or up to 18 if using a wheeled trolley designed for the purpose. Chair with plastic armrests: stackable up to 15 units in height, or up to 22 if using a wheeled trolley designed for the purpose.

Accessories: Stacking trolley in coated steel tubular sections. Black color, with castors for any type of flooring, two of which are directional castors with brakes. Optional writing tablet in black plastic, dimension 356x250 mm.

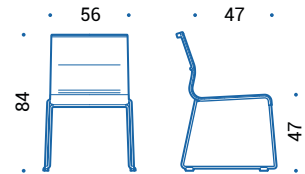
Dimensions



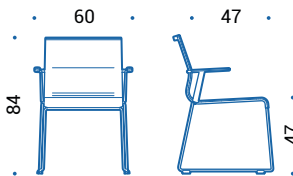
STK.500 | chair on skid



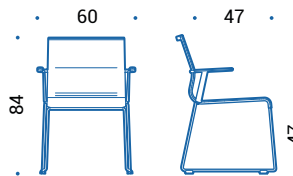
STK.550 | chair on skid, backrest handle and armrests in plastic



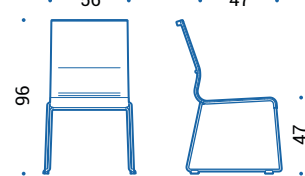
ATK.500 | chair on skid



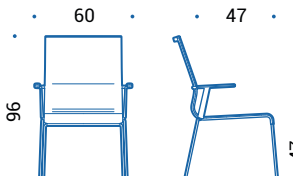
ATK.550 | chair on skid, backrest handle and armrests in aluminum, armrests cover in plastic



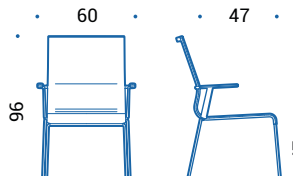
ATK.552 | chair on skid, backrest handle and armrests in aluminum



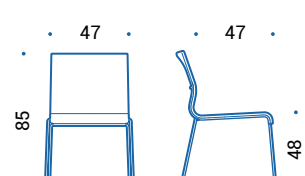
ATK.520 | chair on skid



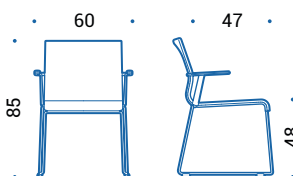
ATK.570 | chair on skid, backrest handle and armrests in aluminum, armrests cover in plastic



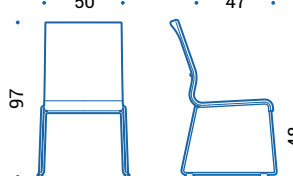
ATK.572 | chair on skid, backrest handle and armrests in aluminum



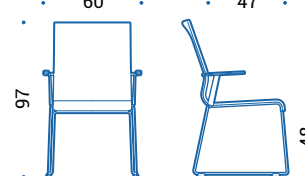
ETK.500 | chair on skid



ETK.552 | chair on skid, armrests in aluminum



ETK.520 | chair on skid



ETK.572 | chair on skid, armrests in aluminum

Colours and finishes

Structure, base and armrests

Steel/Aluminium

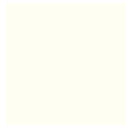


55 | Chromed

Painted steel/aluminium



115 | Black



100 | White



095 | Grey

Plastic material



115 | Black



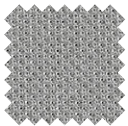
100 | White



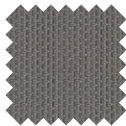
095 | Grey

Upholstery

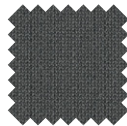
Fabric



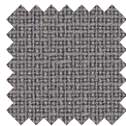
Cat. B | Atlantic
(14 colours)



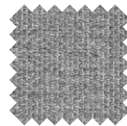
Cat. B | Mini
(7 colours)



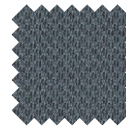
Cat. C | Cura
(8 colours)



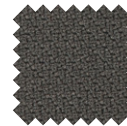
Cat. C | Fame
(7 colours)



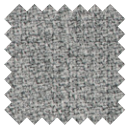
Cat. C | Mini Melange
(9 colours)



Cat. C | Sealife
(11 colours)



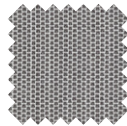
Cat. C | Step
(8 colours)



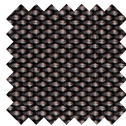
Cat. C | Step Melange
(8 colours)



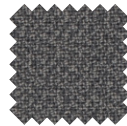
Cat. C | Sotega
(10 colours)



Cat. C | Swing
(13 colours)

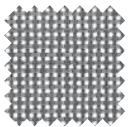


Cat. F | Breeze Fusion
(7 colours)

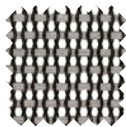


Cat. F | Fame Hybrid
(4 colours)

Mesh



Cat. N | Mesh
(6 colours)



Cat. X | Elastic Mesh
(7 colours)

Leather



Cat. E | Leather
(18 colours)



Cat. H | Premium Leather
(12 colours)

—
icf-office.it
■

ICF