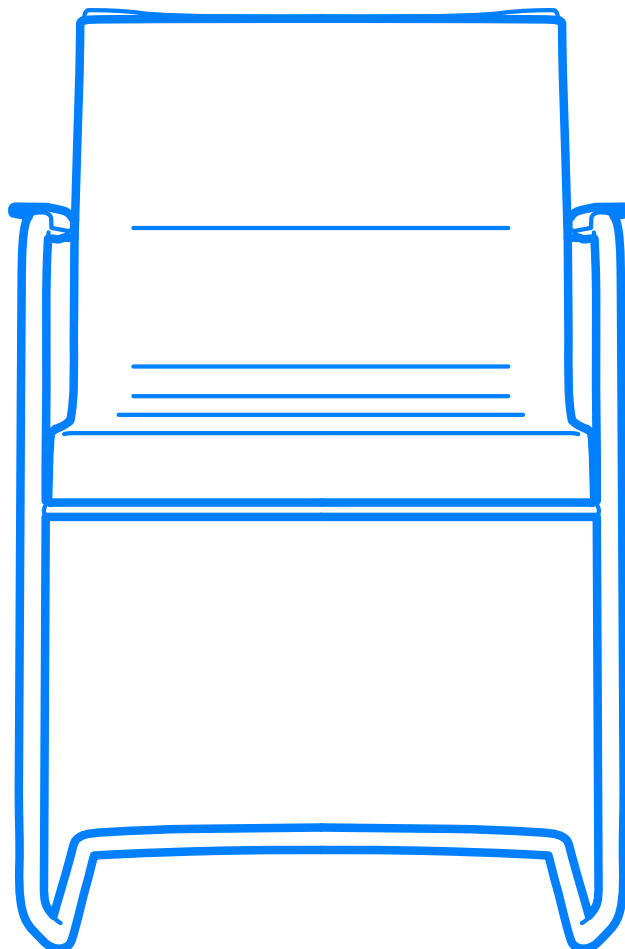


STICK CHAIR

Cantilever



ICF

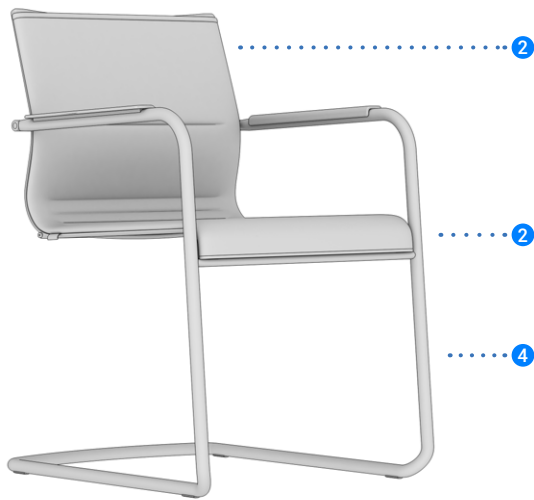
Design story



The cantilever Stick Chair model is defined by its classic, essential and elegant design, with a clearly international attitude and specific attention to comfort. Ideal as visitor's chair and for meeting and conference rooms, it combines innovative materials and high quality details.

The cantilever model base has a flexible tubular steel structure that allows little swinging movements and that is a damping device itself. Together with the elasticity of the monoframe upholstery, in mesh or fabric or leather, it adds additional comfort. Stick cantilever can be easily stacked and the weight of the stacked chairs is unloaded through the specially designed armrests covers. It can be stacked up to 5 units.

Specifications



1 Structure: Die-cast aluminum side elements and crosspieces elements fixed together. The resulting frame is a rigid structure able to maintain its shape even under conditions of considerable stress and also functions as a specific support for the elastic mesh and the fabric or leather padding. Available with low or high back and in three different finishes: polished, chromed or painted.

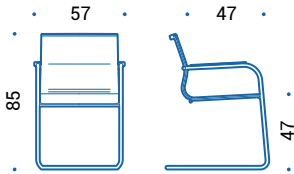
2 Seat and backrest: The seat and backrest are made of a single flexible sheet in elastic material, tensioned in suspension on the perimeter structure. The mesh sheet ensures full breathability and thorough air circulation and is available in nylon mesh (single-color - 75% vinyl resin, 25% polyester) or in elastic mesh (two-toned effect - 70% polyester elastomer, 30% polyester). The fabric or leather sheet is pressed onto a central layer of high-resistance technical material and two layers of flexible polyurethane.

3 Armrests: The plastic armrest have rounded edges and are fixed to base tubular section. Finish depending on the structure. Optional leather armrest covers.

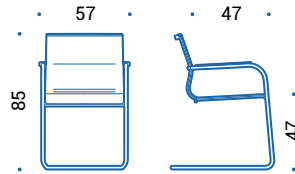
4 Base: Cantilever base in tubular steel with chromed or painted finish, diameter 20 mm.

Stackability: Stackable up to 5.

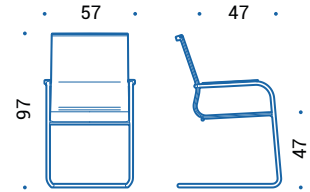
Dimensions



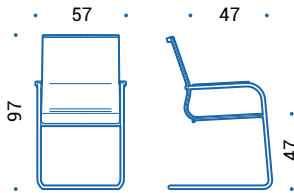
ATK.710 | chair on cantilever, non stackable version, backrest handle in aluminum



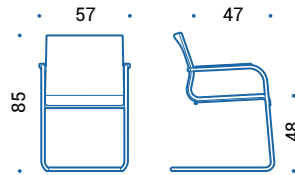
ATK.700 | chair on cantilever, stackable version, backrest handle in aluminum



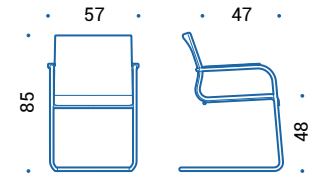
ATK.730 | chair on cantilever, non stackable version, backrest handle in aluminum



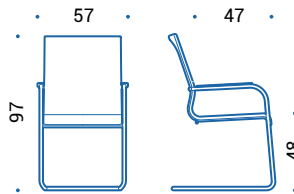
ATK.720 | chair on cantilever, stackable version, backrest handle in aluminum



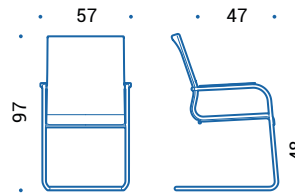
ETK.710 | chair on cantilever, non stackable version



ETK.700 | chair on cantilever, stackable version



ETK.730 | chair on cantilever, non stackable version



ETK.720 | chair on cantilever, stackable version

Colours and finishes

Structure, base and armrests

Steel/Aluminium



55 | Chromed

Painted steel/aluminium



115 | Black



100 | White



095 | Grey

Plastic material



115 | Black



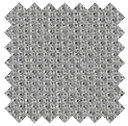
100 | White



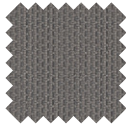
095 | Grey

Upholstery

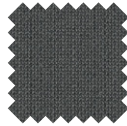
Fabric



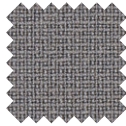
Cat. B | Atlantic
(14 colours)



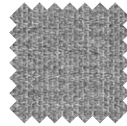
Cat. B | Mini
(7 colours)



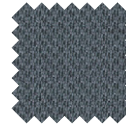
Cat. C | Cura
(8 colours)



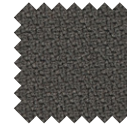
Cat. C | Fame
(7 colours)



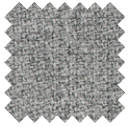
Cat. C | Mini Melange
(9 colours)



Cat. C | Sealife
(11 colours)



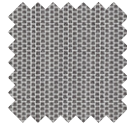
Cat. C | Step
(8 colours)



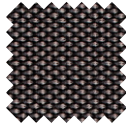
Cat. C | Step Melange
(8 colours)



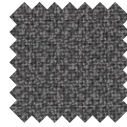
Cat. C | Sotega
(10 colours)



Cat. C | Swing
(13 colours)

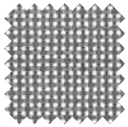


Cat. F | Breeze Fusion
(7 colours)

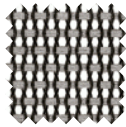


Cat. F | Fame Hybrid
(4 colours)

Mesh



Cat. N | Mesh
(6 colours)



Cat. X | Elastic Mesh
(7 colours)

Leather



Cat. E | Leather
(18 colours)



Cat. H | Premium Leather
(12 colours)

—
icf-office.it
■

ICF